

STATUL DE FUNCȚII AL TEATRULUI CLASIC „IOAN SLAVICI” ARAD
PROPUS

Nr. Crt.	Denumirea funcției de conducere	Nr. posturi	Studii necesare	Denumirea funcției de execuție	Studii necesare	Nr. posturi	Gradul profesional /treapta profesională
1	Manager	1	S				
2	Director	1	S				
3	Contabil sef	1	S				
4	Șef serviciu	3	S				
5				Actor teatru	S	23	GP IA
6				Actor teatru	S	4	GP I
7				Actor teatru	S	3	GPII
8				Consultant artistic	S	1	GP IA
9				Scenograf	S	1	GP IA
10				Scenograf	S	1	GPI
11				Regizor artistic	S	1	GPI
12				Coregraf	S	1	GP IA
13				Actor mânuitor păpuși marionete	S	8	GPLA
15				Referent	M	1	TPI A
16				Secretar PR	S	1	GP IA
17				Referent artistic	M	1	TPI
18				Impresar artistic	S	1	GP IA
19				Impresar artistic	S	1	GPI
20				Secretar literar	S	1	GPII
21				Artist plastic	S	1	GPLA
22				Inspector de specialitate	S	1	GPI
23				Referent de specialitate	S	1	GPI
24				Economist	S	2	GPLA
25				Contabil	M	1	TPLA
26				Casier	M;G	1	
27				Plasator sală	M; G	4	
28				Muncitor din activitatea specifică instituțiilor de spectacole sau concerte	M; G	7	TPI
29				Șofer	M; G	1	TPI
30				Inginer	S	1	GPLA
31				Portar	M;G	1	
32				Pompier	M;G	2	
33				Îngrijitor	M; G	1	
34				Regizor scenă(culise)	S	1	GPIA
35				Regizor scenă	M; G	2	TPI
36				Operator sunet	S	1	GPI
37				Operator sunet	M;G	1	TPI
38				Recuziter	M; G	2	TPI
39				Operator imagine	S	1	GPLA
40				Operator imagine	M; G	1	TPI
41				Iluminist scenă	M;G	1	TPI
42				Operator lumini	S	1	GPIE

43				Operator lumini	S	1	GPI	
44				Operator lumini	S	1	GPIA	
45				Manipulant decor	M; G	8	TPI	
46				Maestru sunet	M; G	1	TPI	
47				Pictor	S	1	GPI	
48	Total funcții de conducere și de execuție	6				96		
49	Total funcții		102					

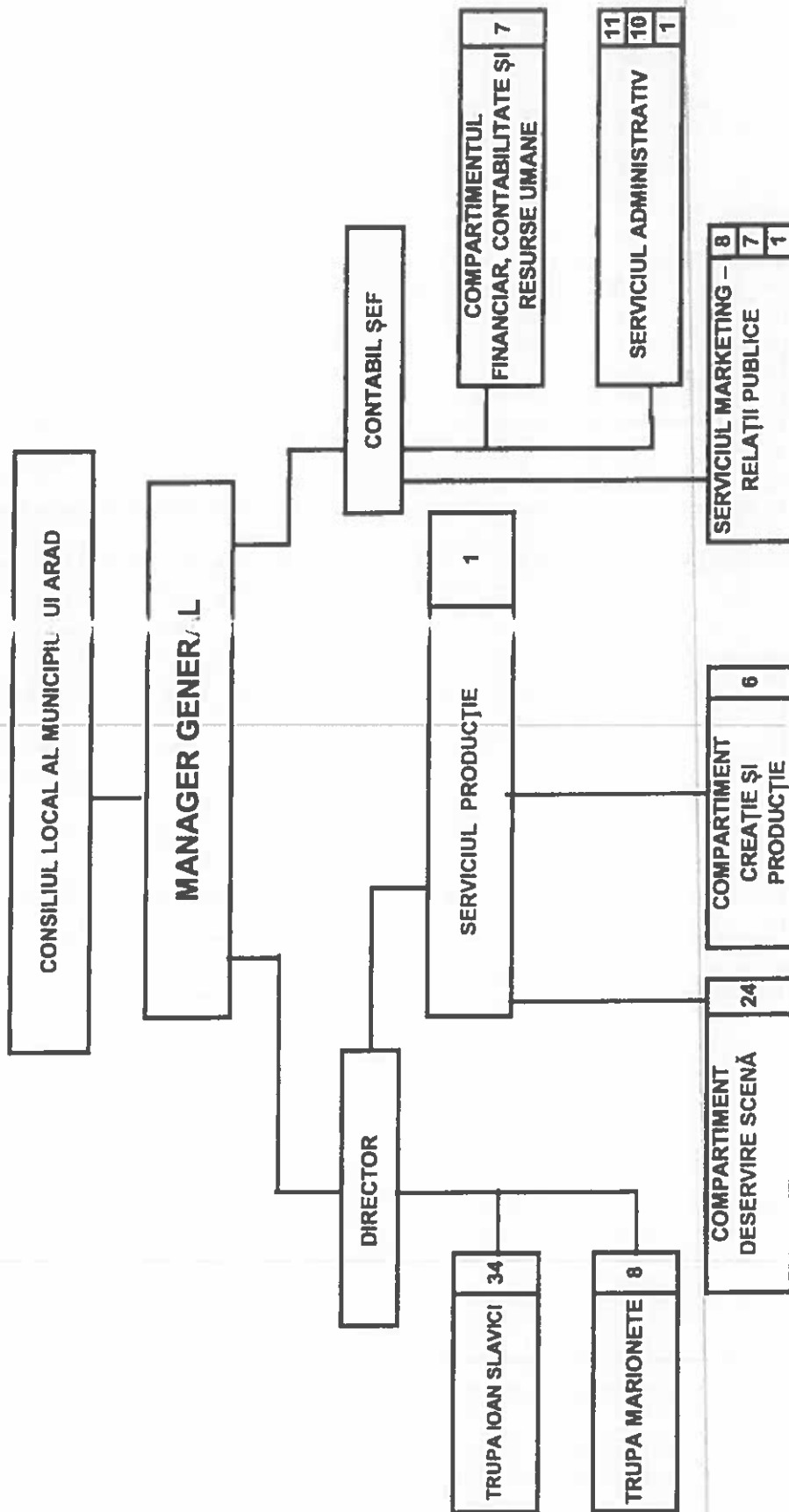
MANAGER

BOGDAN ALB



TEATRUL CLASIC "IOAN SLAVICI" ARAD

Organigrama



TOTAL POSTURI: 102	
Executiv: 96	Conducere: 6



Manager,
Bogdan Alexandru Dăbulea

100

100

100

100

The following table shows the results of the experiment. The data is presented in a clear and concise manner, allowing for easy comparison of the different conditions. The results are as follows:

Condition	Result 1	Result 2	Result 3
Condition A	100	100	100
Condition B	100	100	100
Condition C	100	100	100
Condition D	100	100	100

The results show that all conditions performed equally well, with a 100% success rate across all metrics. This indicates that the experiment was highly successful and that the conditions tested were all viable options.

The following table shows the results of the experiment. The data is presented in a clear and concise manner, allowing for easy comparison of the different conditions. The results are as follows:

Condition	Result 1	Result 2	Result 3
Condition A	100	100	100
Condition B	100	100	100
Condition C	100	100	100
Condition D	100	100	100

The results show that all conditions performed equally well, with a 100% success rate across all metrics. This indicates that the experiment was highly successful and that the conditions tested were all viable options.